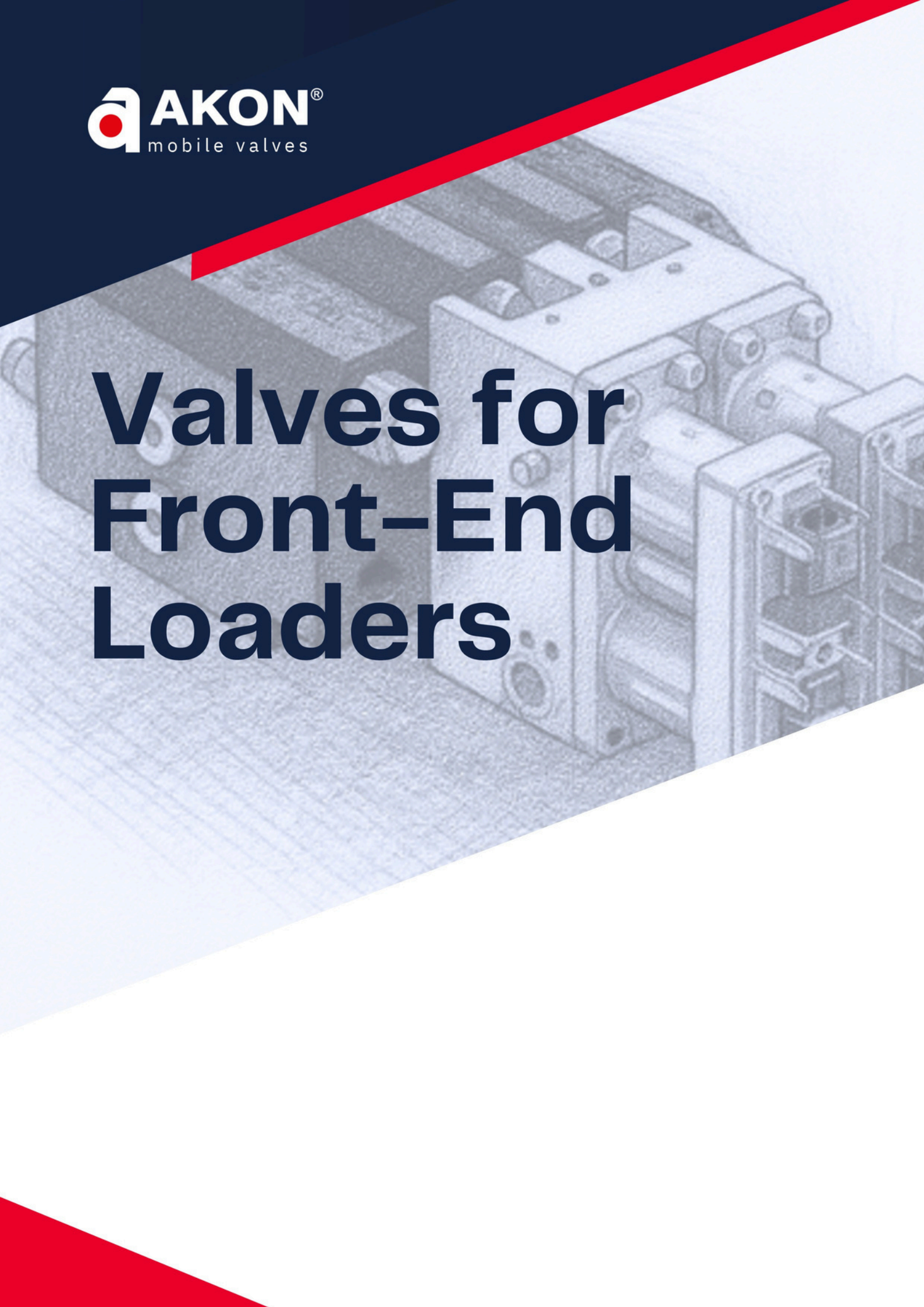




Valves for Front-End Loaders



Directional Control Valve Range for Front-End Loaders

Flow Rate
40 – 100 lt/min

Tractor front-end loaders require precise metering, stable load control, and efficient hydraulic control. AKON valve solutions are optimized for loader lift and bucket functions, delivering smooth actuation, reduced pressure losses, and predictable performance under variable loads.

Load-sensing architectures and electro-hydraulic control options support improved fuel efficiency, responsive operation, and consistent performance across diverse working conditions. Robust casting and controlled manufacturing processes ensure durability in agricultural environments exposed to dust, vibration, and continuous cyclic loads.

Front-end Loader Valves



LVM52

LVM52 a two sections monoblock front loader valve designed for front-end loaders up to 50 l/min. Valve is designed with series circuit and offering excellent operating performance with minimum spool leakage. The rear port construction enables easy piping and assembly of control wires and ready to accept multi-quick couplings

Key Features

- 2 spools monoblock valve suitable for flow rates up to 50 L/min
- Series circuit in standard
- Integrated main pressure relief valve and load check valves in each section
- Wide range of antishock & anticavitation valves
- 4 position float and regenerative functions
- Supplied with remote cable control kits as standard, with a mechanical joystick option available
- Low spool leakage for load holding operations
- Carry-over option

Flow Rate	Number of Sections	Port Threads
50 L/min 13 US gpm	2	BSP G3/8" UNF 3/4-16 (SAE 8)

Front-end Loader Valves



LVM92 / LVM92LS

LVM92 is a control valve specifically designed for front-end loaders, suitable for flow rates up to 90 L/min and operating pressures up to 250 bar. The valve body is machined to support two configuration options – Open Centre or Load-Sensing – allowing system versatility for different hydraulic architectures. Its rear-port design enables direct connection of multi-quick couplings and provides easy routing of piping and cable control lines. LVM92 delivers stable operating performance with minimal spool leakage.

Key Features

- 2 spools monoblock valve suitable for flow rates up to 90 L/min
- Open center and LS versions available
- Parallel circuit in standard
- Integrated main pressure relief valve and load check valves in each section
- Wide range of antishock & anticavitation valves
- 4 position float and regenerative functions
- Supplied with remote cable control kits as standard, with a mechanical joystick option available
- Low spool leakage for load holding operations
- Carry-over option

Flow Rate	Number of Sections	Port Threads
90 L/min 24 US gpm	2	BSP G1/2" UNF 7/8-14 (SAE 10)

Front-end Loader Valves



LVM92-EHP / LVM92LS-EHP

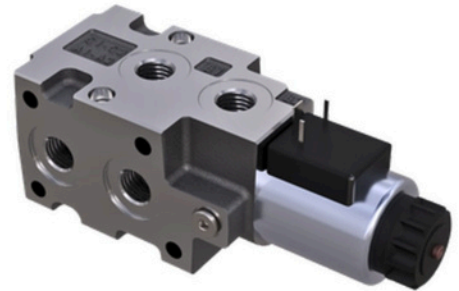
The LVM92-EHP is an electro-hydraulic proportional monoblock valve designed for front-end loader applications, available in both open-center and load-sensing versions. Equipped with on-board electronics with ACAS - CAN-Bus control, it enables seamless integration with modern machine control systems and supports remote parameter configuration via WiFiCAN connectivity. Providing a complete plug-and-play solution when combined with Akon's CAN-Bus joystick, the LVM92-EHP delivers precise, smooth and energy-efficient operation for next-generation loader applications.

Key Features

- 2 spools monoblock valve suitable for flow rates up to 90 L/min
- Open center and LS versions available
- Electro-hydraulic proportional control with on-board electronic module
- CAN-Bus communication interface for system integration and diagnostics
- Remote configuration and parameter tuning via WiFiCAN connection
- Plug-and-play system
- Designed for front loader functions with proportional, smooth and precise actuation
- Rear-port design enabling direct connection of multi-quick couplings and simplified piping
- Integrated main relief valve and low spool leakage for stable performance

Flow Rate	Number of Sections	Port Threads
90 L/min 24 US gpm	2	BSP G1/2" UNF 7/8-14 (SAE 10)

Solenoid Diverter Valves



ASV60

The ASV60 is a 6/2 solenoid-operated diverter valve designed to switch hydraulic flow between two independent circuits, allowing efficient use of auxiliary functions within mobile hydraulic systems. With a nominal flow capacity suitable for medium-to-high duty applications, the ASV60 is engineered as a compact and reliable valve stackable up to 3 valves.

Key Features

- Nominal flow 40 L/min, maximum 60 L/min and maximum pressure rating of 250 bar
- 6/2 solenoid diverter valve for switching flow between two independent circuits
- Compact and robust design suitable for auxiliary hydraulic functions
- It supports high hydraulic power with minimal loss of pressure
- Available with different coil voltage options
- Stackable up to 4 valves

Flow Rate	Number of Sections	Port Threads
40 L/min 11 US gpm	1 - 4	BSP G1/2" UNF 7/8-14 (SAE 10)



AKON HİDROLİK VALF SAN. VE TİC. A.Ş.
A.O.S.B. 10.000 SOKAK NO.22 ÇİĞLİ - İZMİR / TÜRKİYE
TEL : +90 232 376 79 99
MOBILE : +90 534 697 55 08
info@akon.com.tr
export@akon.com.tr
www.akon.com.tr

